

EUTOS for CML



European Treatment and Outcome Study

**A collaboration between
ELN and Novartis to promote:**

CML REGISTRY

- Determine demographic, geographic and ethnic variations
- Evaluate quality-controlled outcomes and implementations of ELN recommendations
- Develop a comprehensive prognostic model

STANDARDISED MOLECULAR MONITORING

- Provide quality-controlled outcome data
- Distribute standardized RQ-PCR for BCR-ABL quantification and mutation detection
- Determine prognostic significance of mutations

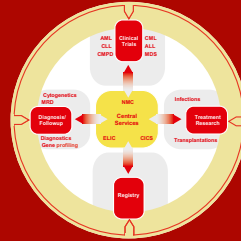
PHARMACOLOGICAL MONITORING

- Provide standardized imatinib blood level testing throughout Europe
- Establish national reference centers
- Define imatinib therapeutic threshold and toxic dose

SPREAD OF EXCELLENCE

- Provide information on CML
- Monitor implementation of ELN guidelines
- Promote information and communication by website, newsletters, CME, symposia

STRUCTURE



SCOPE

The ELN brings together

- 95 national leukemia study groups
- 102 interdisciplinary partner groups
- 1000 physicians and scientists in
- 147 centers and 28 countries
- caring for tens of thousands of patients

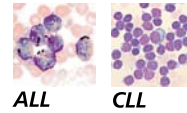
GOALS

- Strengthen scientific and technological excellence with the ultimate goal to cure leukemia
- Develop communication and information structures
- Spread excellence by educational activities, meetings, newsletters and publications
- Prepare guidelines
- Promote clinical trials

CURRENT RESEARCH

Diagnostics

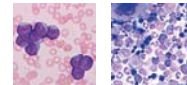
Morphology and immunology
Cytogenetics
Minimal residual disease
Gene profiling



ALL CLL

New Treatments

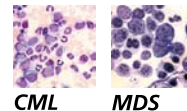
Clinical Trials
Stem cell transplantation
Supportive care



AML CMPD

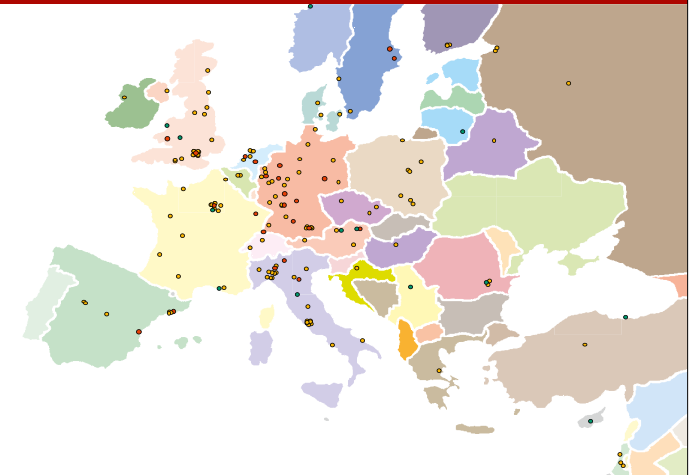
Epidemiology and Outcome

Registries of in-study and out-study patients and population based



CML MDS

147 CENTERS IN 28 COUNTRIES



HIGHLIGHTS

- Establishment of information, communication and management structures via an information center and the network management center, through annual symposia, regular meetings, an ELN website and biannual newsletters
- European Leukemia Trial Registry in accordance with the guidelines of the International Committee of Medical Journal Editors and the World Health Organization
- European registries for CML, ALL, ET and MDS
- Clinical trials on a European level in CML, HES, myelofibrosis, MDS, PV, CLL, mature B-ALL, Burkitts lymphoma, APL, ALL and AML in the elderly
- Quality control rounds and consensus recommendations on a European level for molecular monitoring in CML, cytogenetic analysis in CLL and morphological diagnosis of leukemias
- Guidelines and management recommendations for CML, for detecting BCR-ABL transcripts and kinase domain mutations, for microarray analysis, for definition of transplant-associated microangiopathy, for standardizing indications for SCT and for prophylaxis and empirical antifungal therapy in neutropenic leukemia patients
- Launch of public (ELN) – private (Novartis) collaborations in the fields of CML [European Treatment and Outcome Study (EUTOS) for CML] and MDS (European MDS registry)

SYMPOSIUM 2008 IN HEIDELBERG



CONTACT

Network Management Center
Tel: +49 (0)621 383 4188
E-mail: nmc@leukemia-net.org
www.leukemianet.eu

JOIN

Membership is available by institution.
Everybody with an interest in leukemia is welcome. Prior contact with the respective WP-leader is required.